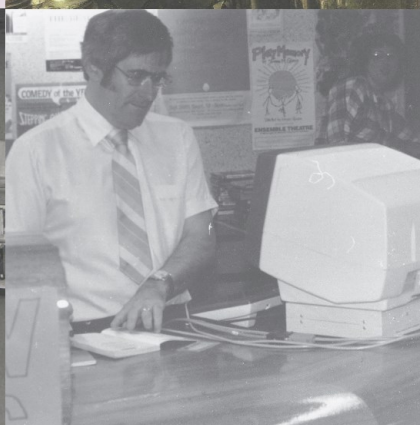
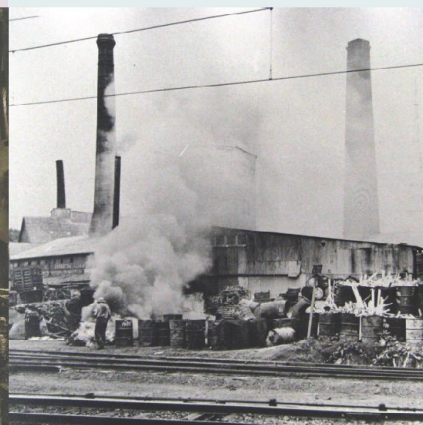


History @ Willoughby



TECHNOLOGY ON TREND at Willoughby

An
exhibition of
technology as
a pop culture
trend



Above left: Workmen on machinery,
Hallstrom's factory, Artarmon (N.S.W.)

Above: Scrap metal and burning off rubbish, Gore Hill,
Artarmon Brickworks, 1956

Far left: Circulation desk, Willoughby Municipal Library,
Chatswood, 1980

Left: First computerised loan at Willoughby City Municipal
Library, Chatswood, 1985

Explore the role of technology trends in Willoughby's development through the industries that took hold in the area. Look at how the library embraces technology to stay on trend and serve the community.



historycouncilnsw

A Willoughby Library Exhibition — open during Library hours
Chatswood Library on The Concourse from Saturday 2 September 2017

The images used in this display are from Willoughby Library's online image library,
Picture Willoughby, at photosau.com.au/willoughby/scripts/home.asp

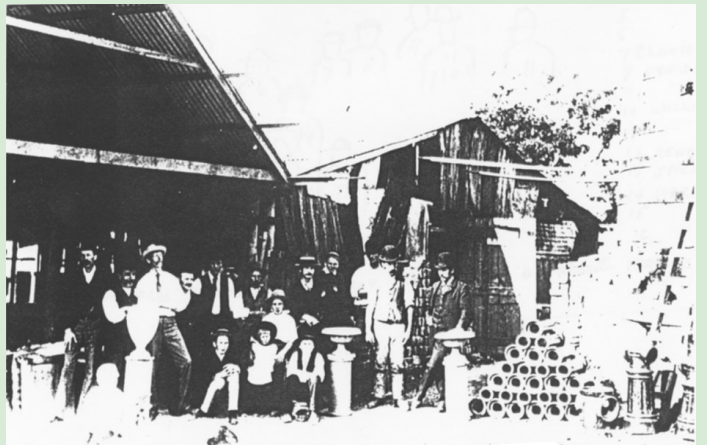


Pottery

Mashman and Sanderson Pottery stood on the site of 179-194 Victoria Avenue, Willoughby for over 110 years. When first opened in the 1880s the firm bought a small pipe machine driven by horse power, but soon upgraded to steam power. It sold clay pipes to drainers and dealers.



Mashman Bros Ltd truck, Victoria Avenue, Chatswood. n.d.



Mashman Bros pottery, Victoria Avenue, Chatswood. n.d.

Because it has stood the test of time for nearly half a century the firm of Mashman Bros. Ltd, with head works at Chatswood, NSW, commands the respect of clayworkers and manufacturers, while to the outsider it furnishes an interesting study in modern methods of turning out articles of first rate utility and of surpassing beauty.

The Clay Products Journal of Australia, November 1934, Great Australian Industry: A Look Over Mashman Bros.

1934

How Clay Was Worked

Batches of raw clay were weighed and placed in a large ball mill containing hundredweights of round flint stones. The stone would grind the clay into a very fine mixture resembling cream.

This mixture was run through fine sieves and down a race where magnets caught and extracted any small particles of iron left over.

It then entered the *Blunger* which kept the mixture agitated until it was pumped through a filter press that forced the water out of the clay.

The solid slab of clay was put through a pug mill made up of revolving blades that forced the clay through a mouthpiece in a prepared block form.

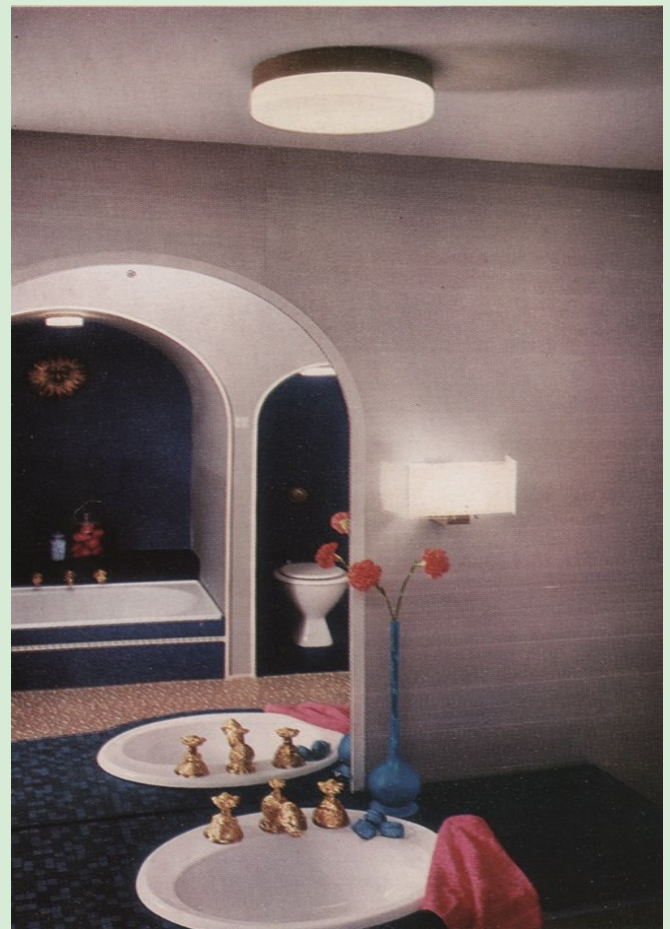
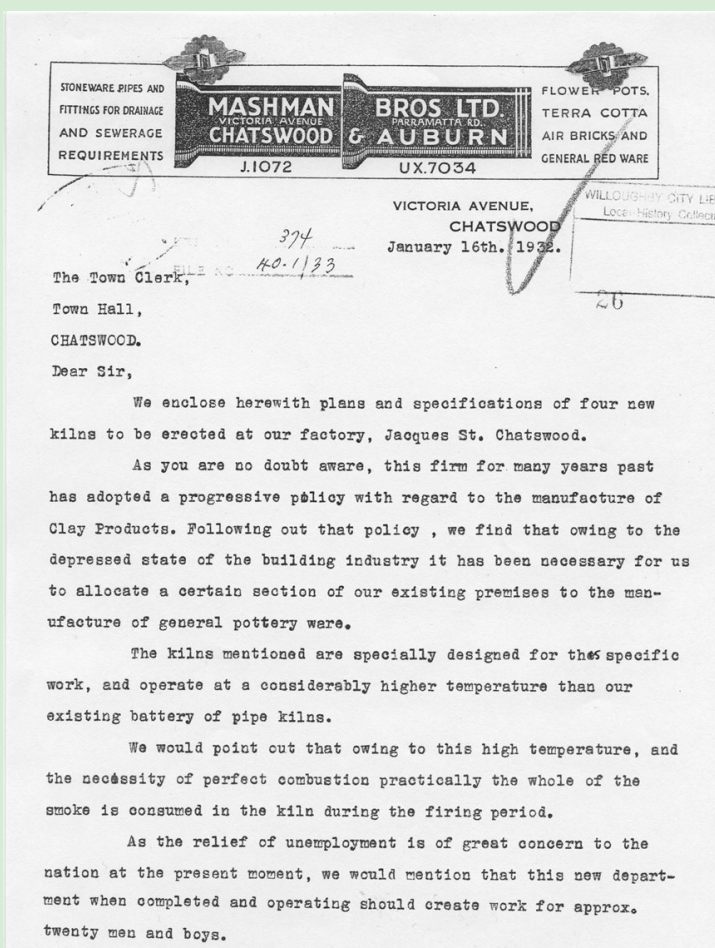
The clay was then ready for the thrower or presser who formed the pottery shapes.

The Clay Products Journal of Australia, November 1934, Great Australian Industry: A Look Over Mashman Bros. Ltd

WAR TIME FACT

During World War II Mashman produced thousands of acid containers for the Middle East, condenser cases, industrial chemical appliances, hospital ware, high tension insulators and porcelain guides for textile industries.

After the war it returned to its specialised production of sanitary ware, including low down suites, pedestal pans, basin and bathroom fittings, hospital ware and stoneware pipes and fittings.



Australian-made vitreous china vanity basin, the *Royal Doulton Review*, March 1969

Tanneries



Johnston Bros Tannery, Chatswood, c.
1905 - drying the hides

As many as 16 tanneries operated over the years...

1880s

Salt hides were soaked in pits and limed before the removal of hair and flesh residue. Hides were then delimed and placed in tanning pits containing tan liquor derived from wattle bark. After several months, the tanned hide was dried and finished.

Excerpt from *A Tradition in Leather* by the Chaffer Group

1869	James Forsyth
1873	HC Owen - Union Tannery
1881	Stephenson and Sons - The Grange Tannery
1882	William Cunningham
1887	George Francis Bailey
1887	Chaffer and Sons – Glenrock Tannery
1892	JB Forsyth – Rosewall Tannery
1896	Scott Bros
1897	George White
1898	Horlsey and Sons
1898	Geering and Son
1899	CT Saxton – Roslyn Tannery
1900	JB Johnston
1902	Wilson Bros
1906	Broomham Bros – Enterprise Tannery
1912	Forsyth Pizzey and Gates
1924	Obern and Sons

TECHNOLOGY ON TREND

at Willoughby



Wilson's Tannery interior, rollers, 1993

Where are
they now?

As the uses for
leather goods
declined and
more synthetic
materials were
introduced into
the market the
tanneries slowly
disappeared.

NEW SOUTH WALES
Form No. 379

Address all Communications to
THE SECRETARY
Box 394, G.P.O.,
Sydney
and quote
No.

MUNICIPALITY OF CHATSWOOD
RECEIVED
21 OCT 1959
ANSD
WILLOUGHBY

BOARD OF HEALTH
52 Bridge Street
Sydney
14th October, 1959.

Dear Sir,

"NOXIOUS TRADES ACT, 1902."

With reference to recent application from your
Authority for Noxious Trade License for
Name: W. CHAFFER & SONS PTY. LTD., GIBBES STREET, CHATSWOOD.
Trade: TANNER.

I am directed to inform you that the Board of Health has
approved granting of license, which has been prepared
accordingly and sent you for completion and issue to trader.

2. I have been instructed to specially point out that
although the Board has approved licensing in this case, it
is necessary that certain improvements, mentioned hereunder,
be effected as speedily as possible at the premises; your
Authority, therefore, should require the trader to carry
them out without any delay.

3. It is desired that you will be good enough to
report when the requisite work has been duly completed.

Yours faithfully,

G. LOUGHREY,
Secretary

WILLOUGHBY CITY LIBRARY
Local History Collection VF
Industries
TANNERIES

IMPROVEMENTS AND ALTERATIONS REQUIRED:-

1. Thoroughly clean after each day's operations the machines
and floor in fleshing department.

CHIEF HEALTH AND BUILDING INSPECTOR

The Town Clerk,
Willoughby Municipal Council,
CHATSWOOD.

TECHNOLOGY ON TREND

at Willoughby

What if tanneries were still
in operation in beautiful and
bustling Willoughby?

Can you imagine
the smell?



Tanners at Johnston Bros. Tannery, Chatswood, 1884.

Note the hooks, blades and aprons of these men – tanneries
were a messy business!

Brickworks

Butcher Bros Brickworks

1901

- Consisted of a brickmaking plant, machine shed, engine and boiler and six open kilns. They had the capacity to produce 360,000 bricks per month.

- Over the years they built a patent kiln, upgraded their engines, installed new brickmaking machines and grinding pans.

1915

- Butcher Bros was turning out 1,500,000 bricks per month, employed 100 men and owned 30 horses and carts.

Steam power

In the middle of the 19th Century the invention of steam engines made it possible to use steam power in brick-making. *The semi-dry pressed brick* was created. Clay and shale were ground together with a very small quantity of water. This mixture was fed into a very strong press that pressed it into brick shaped moulds. The green brick was strong and could be loaded straight into the kiln without a long drying process.



From Brick Pits prosperity No 2 Pit., Artarmon, 7 December 1956

Cool tech for hot Willoughby Ice Works

“ There was an Ice Works in Victoria Avenue which produced the ice for the carters. It was a magnet for the kids in the hot summer months. When the big circular saw cut the slabs of ice into blocks, there was always a large deposit of shavings on the floor underneath, which built up during the shift. We called it “snow”. When the workers had a break we were allowed to go underneath with our bilycarts, and pack them with this “snow”. We buried oranges in this snow, and when they were frozen solid, threw them against a wall. They were softened so we could peel away a small piece of skin, and have ready-made icy cold orange drinks on those hot days.

Excerpt from *Tram to Balmoral Beach and Jesus* by Don Horne,
2015, p. 27

SEVERE SHORTAGE OF ICE IN SYDNEY

SYDNEY: Thousands of families in many districts have now been without ice for a fortnight, ice manufacturers revealed today. Health tragedies would face thousands unless the Government released men from the Army to produce more ice, they declared.

One man, among crowds who stormed Chatswood Ice Works yesterday, raced around picking up chips of ice and putting them in a tin.

“We found that he wanted them for an old man who was dying,” said the iceworks foreman.

“Scores of times when I was answering phone calls by almost tearful women, pleading for ice to be sent, I heard small children crying. It seems ridiculous that men should be released to produce more meat but they can’t release men to produce ice to keep the meat fresh.”

Wastage and deterioration of food has been heavy in shops and homes.

“An appalling dump for the public” was the description given to the position today by two ice manufacturers. Release of men from the Army was the only solution, they said.

The Telegraph (Brisbane, Qld), 29 December 1942

1839

Ice has long been used in the preservation of food. Sydney’s first ice was natural ice transported from Boston USA in 1839. The natural ice trade plummeted when technological advancements led to man-made ice.

1908

Ice Works in Willoughby date back to 1908 when the Jackson Brothers established the Chatswood Ice Works on Albert Avenue. The plant manufactured blocks of ice that were delivered to residents by the “ice man” for the preservation of food.

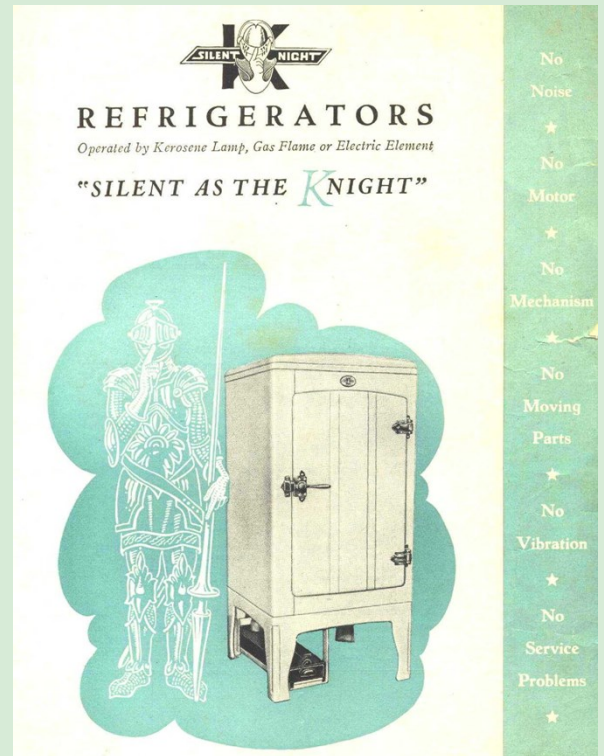
1954

The Ice Works became obsolete and closed in 1954 due to new technology that became common in many homes and shops...

The Rise of the Refrigerator

Hallstrom

Hallstrom began his career in refrigeration by inventing a kerosene-powered refrigerator for outback stations and country homes that did not have electricity. He opened a refrigerator factory in Willoughby in May 1934 where he manufactured kerosene, gas and electricity run models. His most popular refrigerator was the Silent Knight.



Cool Comfort for Country Homes!

Typical Hallstrom Recipes

IN MINT JELLY

2 dessertspoons gelatine 2 tablespoons vinegar
3 lbs. neck mutton or lamb 2 cups clear jelly
2 cups stock 1 lettuce
2 tablespoons finely chopped meat

Braise mutton, and when cold, cut into cutlets. Dissolve gelatine in two cups of stock, add to it vinegar and mint. Lay the cutlets in a dish and pour this over. Have cutlets well covered. Chill in Hallstrom. Serve in a bed of lettuce, put chopped jelly round.

GELATINE CHEESE

2 dessertspoons gelatine 4 tablespoons cheese
1 cup milk Pepper, salt and parsley

Heat milk, parsley, salt and grated cheese till dissolved. Then strain through sieve. Cool, and add gelatine dissolved in hot water. Pour into small moulds and set in Hallstrom. Serve on lettuce with salad dressing.

PEACH MERINGUE

1 tablespoon gelatine 1 cup sugar
2 tablespoons cold water 2 egg whites
1 cup boiling water 1 cup cream
1 tin peaches Nutmeg gratings

Soak gelatine in cold water and dissolve in hot. Put peaches cut in small pieces, sugar, and egg whites into bowl, and beat till stiff, taking about 10 minutes. Add gelatine slowly, beating constantly, and fold in cream and nutmeg. Place in Hallstrom tray for 4 hours. Serve in meringue shells, and garnish with slices of fresh peaches.

COCOANUT WHIP

1 dessertspoon gelatine 3 tablespoons sugar
1 white of egg 3 tablespoons lemon juice
1 cup of hot water 2 tablespoons desiccated coconut

Dissolve gelatine and sugar in hot water, add lemon juice, strain, and set aside to cool. When cold beat with an egg beater until frothy, add stiffly beaten white of egg. Mix in coconut and beat till stiff. Pour into mould and set in Hallstrom.

SPICE CUP

2 cups orange juice 1 tablespoon strained honey
1 cup pineapple juice 5 whole cloves
2 cups water 1 teaspoon grated nutmeg
1 cup sugar 1 teaspoon cinnamon
Grated rind of 1 lemon 1 teaspoon allspice
3 pints ginger ale

Combine orange juice, pineapple juice, water and sugar. Add grated rind of lemon, honey, cloves, nutmeg, cinnamon and allspice. Mix and let stand for 3 hours. Strain through cheesecloth and add the ginger ale. Stir briskly and serve in glasses containing ice cubes.





MANUFACTURED BY: **E. HALLSTROM**

PHONE: J 5844 - J 2992 462-464 WILLOUGHBY ROAD, WILLOUGHBY

Telegrams & Cables: "Halstro," Sydney

“One of the most popular units of kerosene operated refrigeration is the Hallstrom, produced by E J Hallstrom of Willoughby, Sydney. Thanks to the inventive genius of E J Hallstrom refrigeration is now available, readily, easily, and cheaply, to the most remote settler in the most torrid corner of the world.”

Northern Times, 10 February 1939, Kerosene Operated Refrigeration

TECHNOLOGY ON TREND

at Willoughby

Truth **HALLSTROMS** **SILENT NIGHT** **PRESENT!**
New De Luxe Silent Knight
THE GREATEST REFRIGERATOR AT THE LOWEST PRICE

- No motor.
- No noise—no vibration.
- Porcelain enamel interior and base.
- Ample food storage space.
- Modern cabinet design.
- Non-rusting metal exterior.
- Heavy chromium plated hardware.
- Colours: Cream, Green, White.

GAS OR ELECTRIC
£62 10 0
 (F.O.R. Sydney—Packing and Installation extra.)

An Engineering Achievement in lasting qualities and performance. The Product of HALLSTROMS
 Universally recognised as the manufacturers of the "People's Refrigerator at the People's Price."
 SOLE MANUFACTURERS
HALLSTROMS PTY. LTD.



Hallstrom's factory, interior. Artarmon, n.d.

Radio

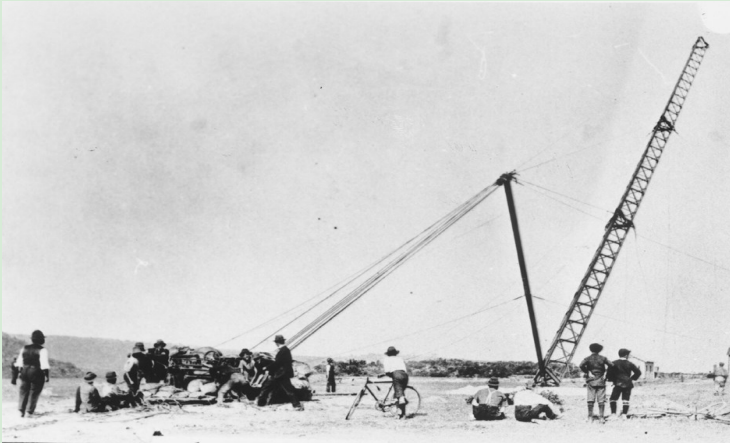
Radio 2FC was one of Australia's first radio broadcast stations. It went to air in Sydney in December 1923 from a large wireless station belonging to Farmer and Company Ltd Broadcasting Service at Edinburgh Road and Lyle Street, Willoughby. The station transmitted via a powerful 5000 watt transmitter. At that time it was one of the largest in the world. This transmitter was later dismantled in 1929.



Radio 2FC postcard, 1927. Radio station 2FC was situated on the corner of Edinburgh Road and Eastern Valley Way, Castlecrag. It transmitted from that site from 1923-1929.

TECHNOLOGY ON TREND

at Willoughby



2FC radio aerial, Castlecrag,
c. 1923



FM

In September 1982 the Australian Broadcasting Tribunal granted a licence for Willoughby's first stereo FM radio station 2NBC 91.5FM. The plan for a community run radio station had been in the works since 1976. This station later became known as 2NSB Northside and in 2000 changed frequency to 99.3 FM

AUSTRALIAN BROADCASTING TRIBUNAL

153 WALKER STREET NORTH SYDNEY N.S.W. 2060 P.O. BOX 1308 NORTH SYDNEY 2060, TELEX 'ABTEE' 26683
TELEPHONE 922 2900

Radio (Mia Reidy's papers)

INQUIRY INTO AN APPLICATION FOR THE GRANT OF A LICENCE
FOR A PUBLIC BROADCASTING STATION TO SERVE THE AREA
WITHIN THE BOUNDARIES OF THE LOCAL GOVERNMENT AREAS OF
KU-RING-GAI, WILLOUGHBY, LANE COVE, NORTH SYDNEY AND
MOSMAN

DECISION

The Tribunal decides:

1. To grant a licence for a public broadcasting station, to serve the area within the boundaries of the Local Government Areas of Ku-ring-gai, Willoughby, Lane Cove, North Sydney and Mosman to Northside Broadcasting Co-operative Limited.
2. The licence is granted for the special purpose of providing program services appropriate to a Category 'C' type public broadcasting station as defined in the "Guidelines for the Planning of Public Broadcasting in Phase I" which accompanied a Ministerial Statement to the House of Representatives on 5 April 1978.

Television Booms

NBN

16 September 1956: TCN Channel 9 broadcast the first television programme in Australia. This was from St David's Church Hall in Surry Hills as the Artarmon Road studios had not been finished.

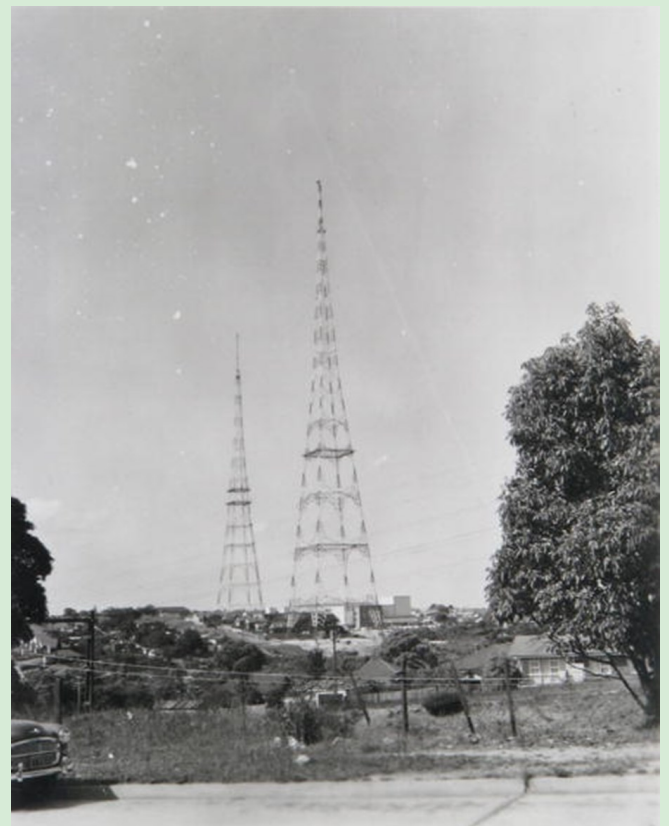
The station stood on R H Foster's St Leonards dairy. TCN Channel 9 acquired the property at Artarmon Road in 1955. It was the first television station to screen programmes 24 hours a day.

1982: Its first satellite receiving dish was built.

2017: Nine Entertainment was in the process of selling the Artarmon headquarters and moving to a new site at Denison Street North Sydney.



Clarion, 25 September 1958



TCN Channel 9 television broadcasting towers, Artarmon, 1964

TECHNOLOGY ON TREND

at Willoughby

Debris is falling into backyards from the television tower being extended at the intersection of Hampden and Mowbray Rds, Artarmon, a resident has claimed...

"It would have killed her boy if it had hit him..."

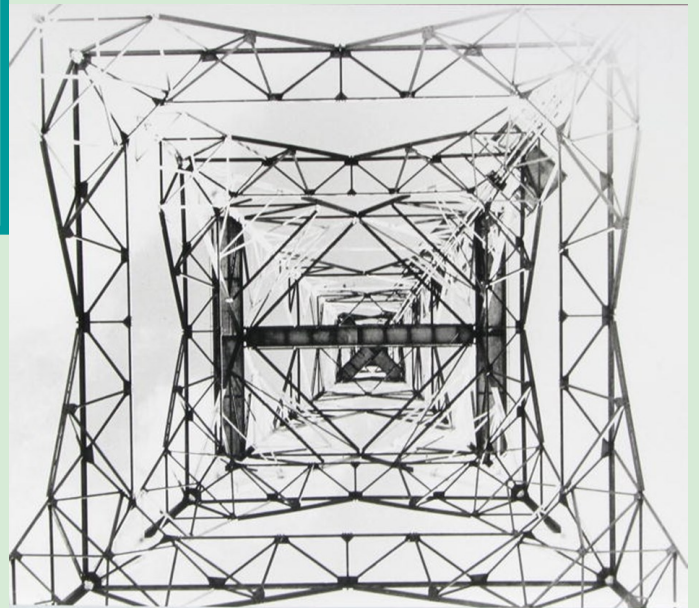
North Shore Times, 18 July 2001

ABC

November 1956: ABC's Gore Hill northside production complex televised their first broadcast when James Dibble presented a news bulletin on the Russian invasion of Hungary.

Its elevated position was perfect for a transmission tower.

2003: Gore Hill site was sold when production moved to Ultimo. Most of the site was demolished in 2007.



ABN Television Tower construction, 1956.

MEMORY

Producer Jon Casimir's favourite part was the bracing smell of the waste management facility beside the car park.

Telecommunication

Subject of Communication: Telephone Exchange at Chatswood was established on 22nd inst. 5075 2232/639 1676

From whom received: Telephone Mgr

Date of Communication: 23.11.97

I have to report for the information of the Engineer-in-Chief that a Branch Telephone Exchange has been established at Chatswood on the 22nd. inst. Open between the hours of 9 a.m. and 8 p.m. Sundays excepted.

Manager, Telephones.
23 - 11 - 97

This I should now be gazetted but it will have to be open on Sundays as well as other days, as the utility of the Exchange will otherwise seriously affected, as it is more than likely that it will shortly be made a day, and night service will be necessary for Sunday unless it will have to be closed.

NOTE: All explanations or reports should be written in regular hand, and if it is necessary to write on the other side of this document, the paper should be turned over and the writing continued on the other side. The corners of this paper should on no account be turned down for the purpose of writing an explanation or report. Every report should be numbered, viz., the first officer's comments, "1," the next officer's, "2," and so on, until the paper is finally dealt with. In all except formal matters, the reports and explanations should be written in full, and not in shorthand or by initials.

Letter from Manager, Telephones, 23 November 1897

Chatswood Phone Lines



1911

- 802 Lines

1917

- 1,902 lines

1924

- 4,251 lines

1967

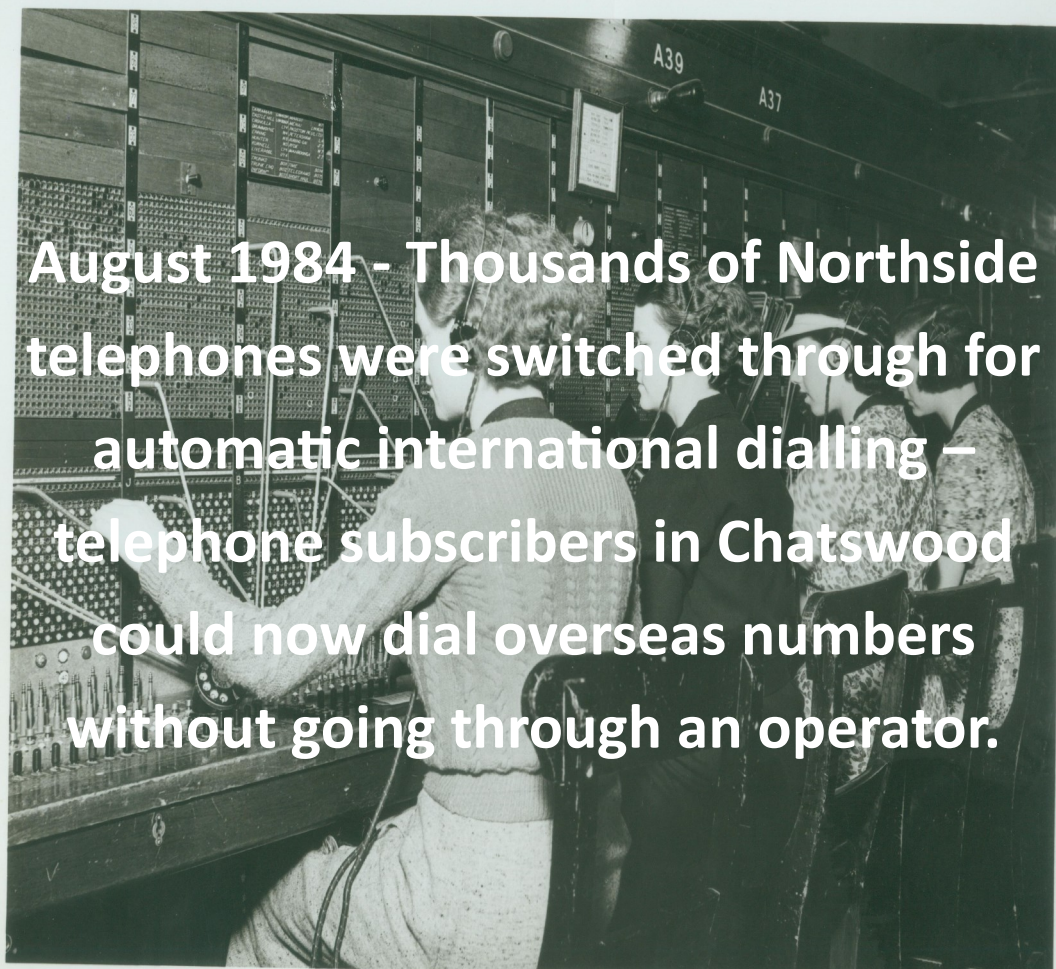
- 6,650 lines

TECHNOLOGY ON TREND

at Willoughby



Advocate, 10 November 1982



TECHNOLOGY ON TREND

at Willoughby



Optus cables

Anti-cable rally

by MALISSA MILLIGAN

WILLOUGHBY Council plans to reignite public pressure on the Federal Government to bury telecommunications cables by calling a public rally on March 8.

Council is convening the rally at the Willoughby Civic Centre in association with the prolific Cables Downunder — a lobby group which has connections with 14 Sydney councils.

Prime Minister John Howard, Local Government Association president Peter Woods, Democrats senator Lyn Allison and a bevy of local representatives, including Willoughby Mayor Eunice Raymond, among the invited line-up of speakers, Cr Raymond acknowledged

Council backs residents

the aim of the rally was to bring the public's attention back to the overhead cabling issue.

"It was always going to be difficult — if not impossible — to stop rolling out overhead because of the legislation," she said. "I was resigned to lose that battle but we have to win the war and get the cables underground. It was always going to be a long term thing."

Council's recent \$1000 donation to the Cables Downunder group further cements its readiness to commit financially to fighting overhead cables.

The Mayor said, however, she believed residents supported council's stand.

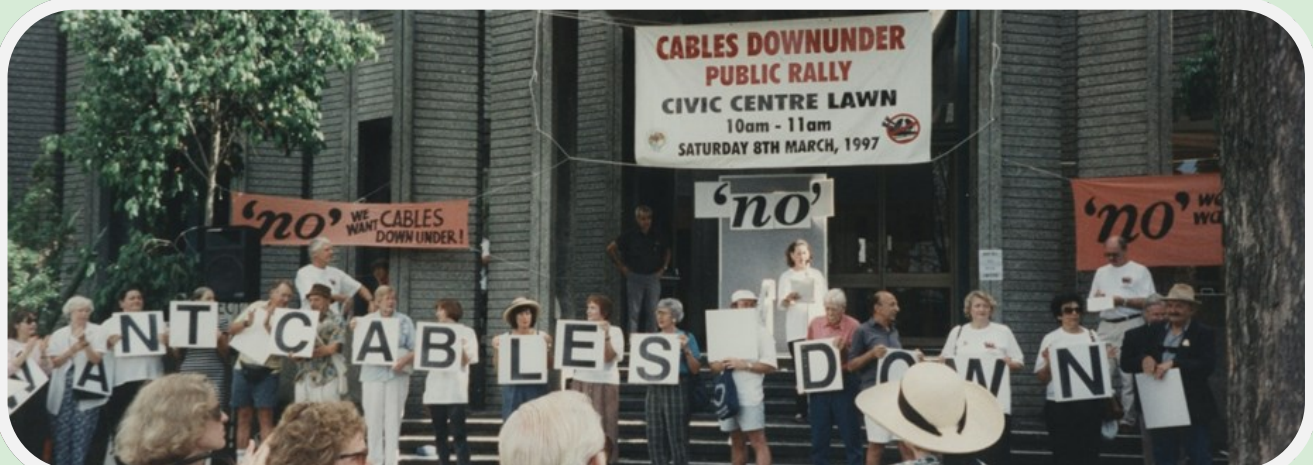
"I would say, from the response I get, they would be very supportive."

"There's an extremely strong feeling out there about these cables and I would think they think it was money well spent."

Cr Raymond said she was still getting legal advice on earlier calls for council to issue a boycott on Optus services.

The rally will be held from 10am to 11am at Willoughby Civic Centre, 411 Victoria Ave, Chatswood.

North Shore Times, 19 February 1997



Cables Down Under Public Rally, 8 March 1997

Public Concern

NOTICE OF PUBLIC MEETING PROPOSED OPTUS MOBILE PHONE ANTENNAE AT NORTHBRIDGE GOLF COURSE

Council will hold a public meeting to discuss the proposal by Optus to erect mobile phone antennae at Northbridge Golf Course.

The public meeting is to be held at the Northbridge Public School, Sailors Bay Road, Northbridge on Thursday, 9 June 2005 commencing at 7.00pm.


The purpose of the meeting is to discuss the proposal and to discuss how concerns raised by the local community might be addressed.

A representative from Optus has been invited to attend the Public Meeting.

You are welcome to attend the public meeting to give your views and to listen to others.

You do not need to register with Council to attend the public meeting.

John Owen
GENERAL MANAGER
31 VICTOR ST CHATSWOOD
PO BOX 57, CHATSWOOD 2067
Ph: 9777 1000 Fax: 941 8309



www.willoughby.nsw.gov.au

2158714; nst wk49

North Shore Times, 8 June 2005

Towers a concern

VINCENT MORELLO

MORE than 100 parents and residents attended a public meeting last Thursday to discuss plans by Northbridge Golf Course to install an additional mobile phone tower on its land.

Northbridge Primary School is next to the golf course and parents are worried about potentially harmful radiation emissions from existing towers next to the driving range.

Club executives have permitted Optus to erect three towers and the club is considering a fourth.

Each tower fetches \$20,000 per year in rent to the golf course, which executives claim will fund its much-needed \$1 million water catchment project.

But some parents said children should be at least 500m from the towers because too little is known about their emissions.

Others dissented and claimed a single mobile phone emits more radiation than a tower.

Willoughby Mayor Pat Reilly hosted the meeting in the school's hall and State Liberal MP for Willoughby Gladys Berejiklian and Federal Liberal MP for North Sydney Joe Hockey were also present.

Because the emissions from mobile phone towers are within Federal Government guidelines, state and local governments are powerless to stop phone companies from installing the devices anywhere they choose.

Mr Hockey agreed to speak to Optus representatives this week with hopes of relocating the towers to another location.

North Shore Times, 15 June 2005

TECHNOLOGY ON TREND

at Willoughby

No dial tone

TELSTRA will switch off its CDMA mobile network this month, making CDMA phones redundant. Willoughby Council will accept old CDMA handsets, batteries, chargers and accessories at a MobileMuster drop-off point at Willoughby Council, level 4, 31 Victor St, Chatswood, from 9am to 5pm Monday to Friday.

CDMA: Code Division Multiple Access

A mobile communication standard

North Shore Times,
9 April 2008

NORTH WILLOUGHBY

Telstra boosts its mobile coverage

NORTH Willoughby and Roseville residents can now access faster downloads, with Telstra switching on 4G LTE mobile coverage.

Telstra is upgrading 200 suburbs, regional towns and holiday hot spots with 4G coverage by the end of 2013, and North Willoughby and Roseville are part of this program.

North Shore Times, 6
December 2013

CHATSWOOD

Mobile phone tower on course

➡ A PROPOSAL to install a 30m telecommunications tower near Chatswood Golf course will be discussed on Thursday, January 29.

An information session is scheduled from 4pm to 6pm at Chatswood Golf Club.

The proposed Optus tower will improve call and data coverage in the area.

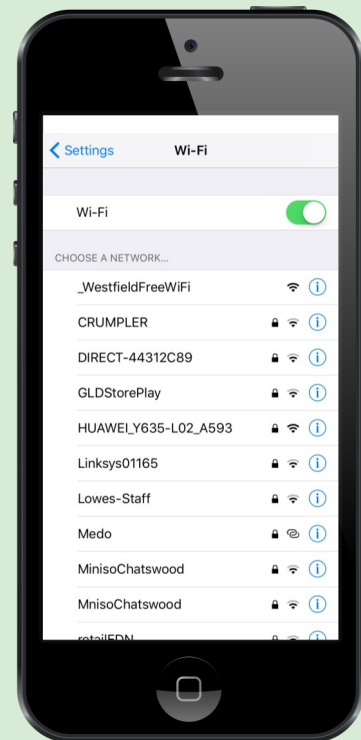
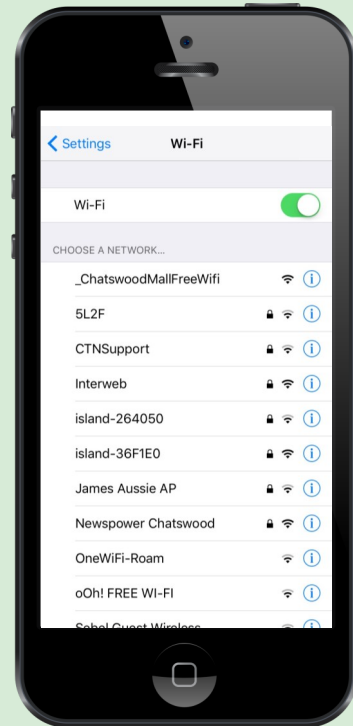
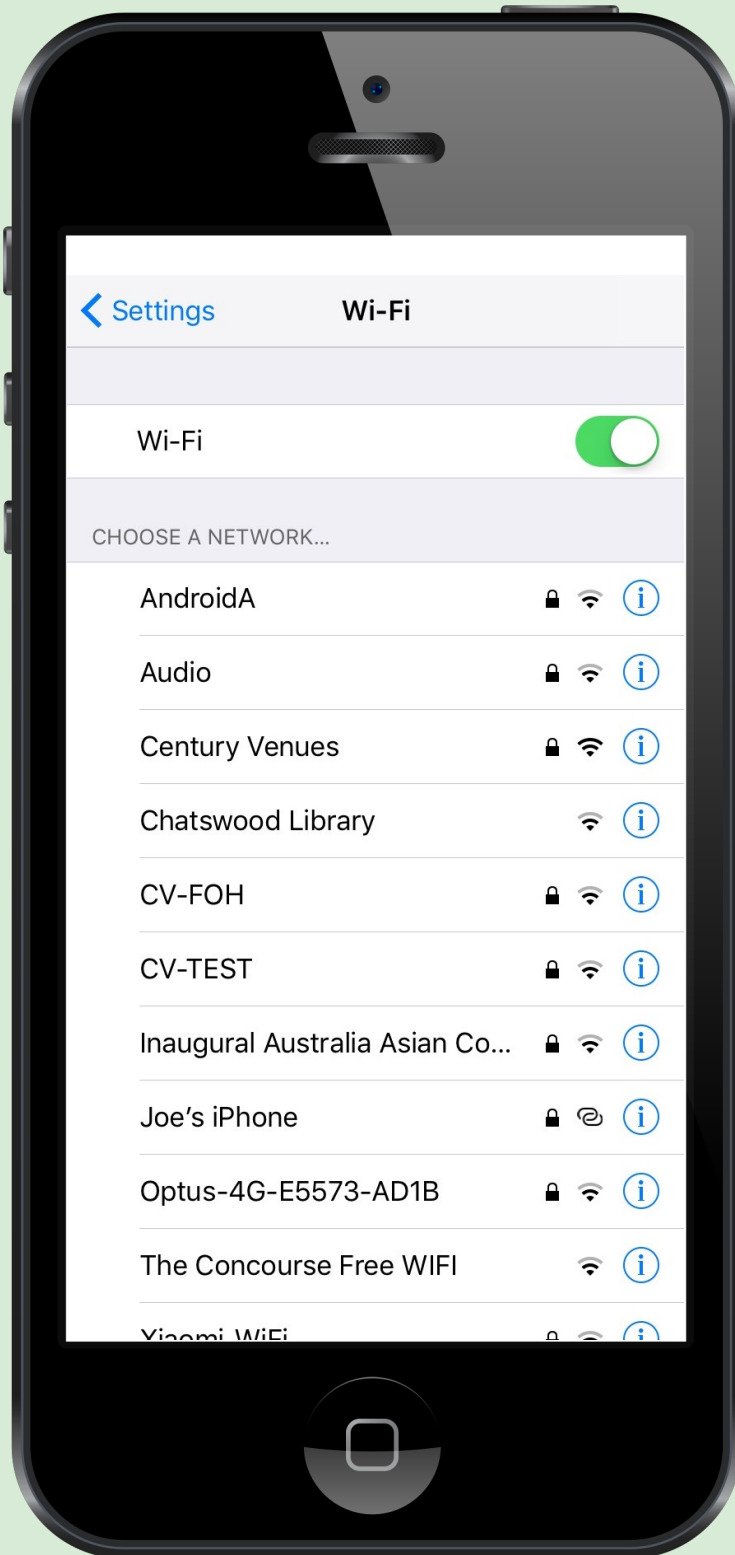
A development application will be lodged with Willoughby Council in February.

Details, 9934 7840.

North Shore Times, 21
January 2015

TECHNOLOGY ON TREND

at Willoughby



Now in Willoughby

Industry in Willoughby has increased and diversified in the last century.

In 2016 the top three registered business industries in Willoughby were:

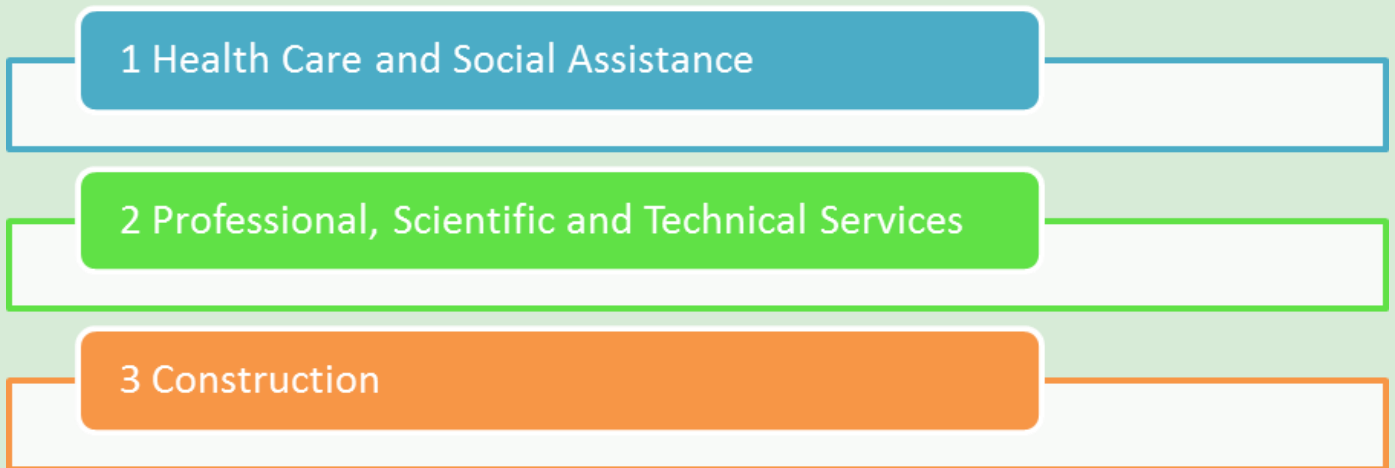
1 Professional, Scientific and Technical Services

2 Rental, Hiring and Real Estate Services

3 Financial and Insurance Services

This is based on how many businesses there are in Willoughby City within each industry sector using the Australian Bureau of Statistics (ABS) Business Register.

This differs from how many people were employed in industries in Willoughby. The employment by industry in 2016 was:



This is the estimated total number of persons employed in an industry sector (full-time and part-time) in Willoughby City regardless of where they live.

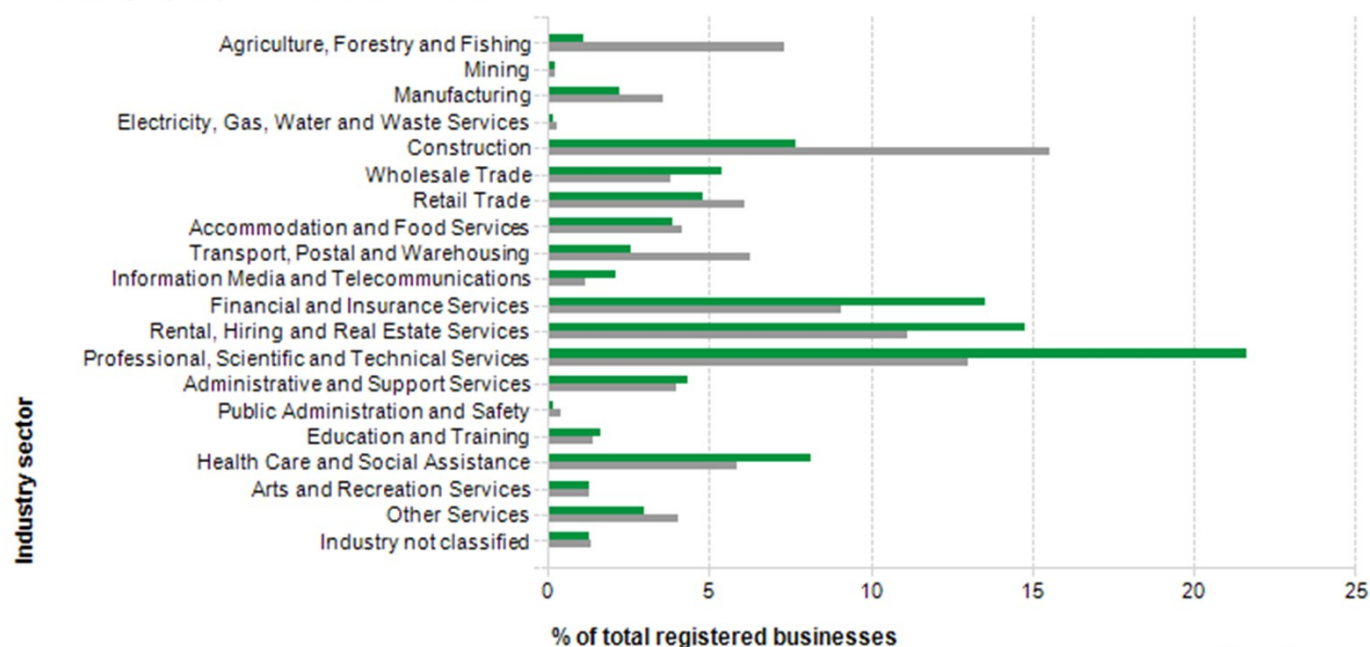
TECHNOLOGY ON TREND

at Willoughby

Registered businesses by industry 2016

Total registered businesses

Willoughby City New South Wales

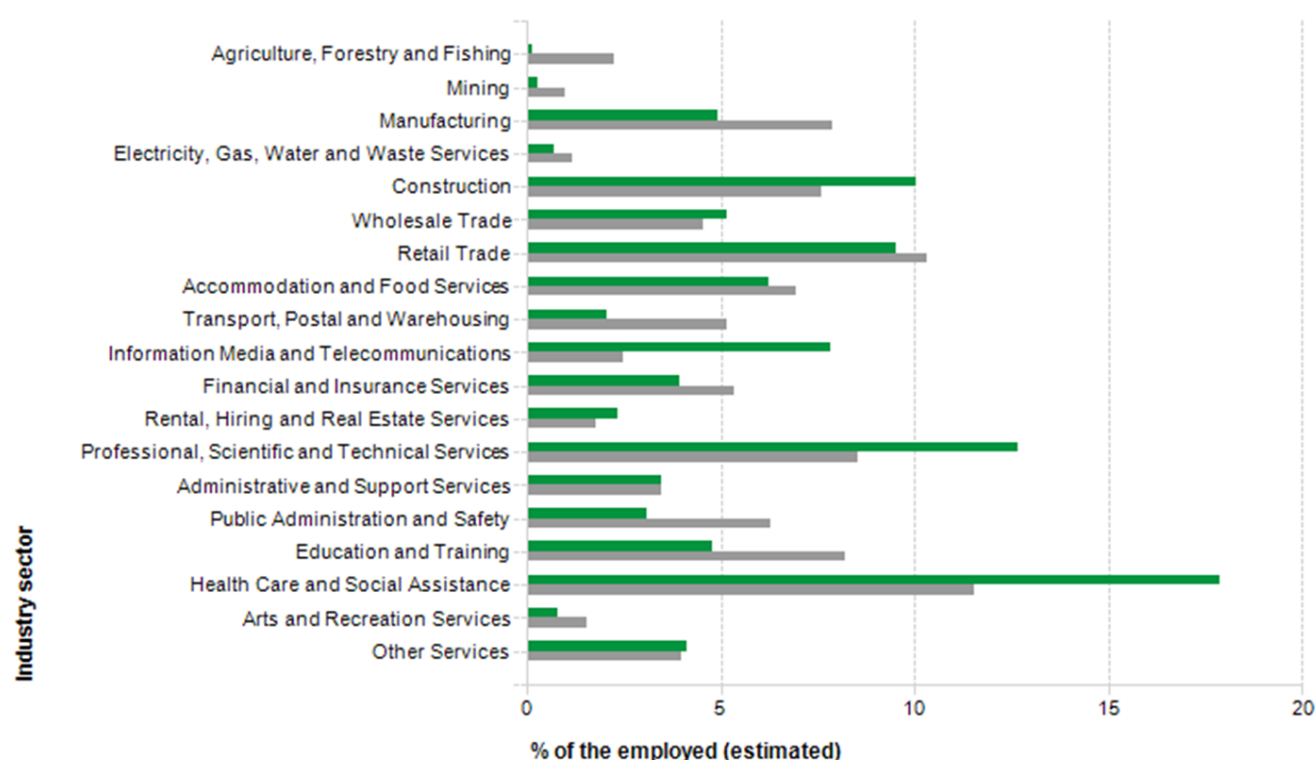


Source: Australian Bureau of Statistics, Counts of Australian Businesses, including Entries and Exits, 2011 to 2015 Cat. No. 8165.0

.id the population experts

Employment (total) by industry 2015/16

Willoughby City New South Wales



Source: National Institute of Economic and Industry Research (NIEIR) ©2016
Compiled and presented in economy.id by .id the population experts

.id the population experts

Textile Willoughby

Speedo

Speedo Knitting Mills Pty Limited

MEMORY

According to a letter by A. Dimmock to the Willoughby District Historical Society the machine floor consisted of about 30 sewing machines used for swimwear, Jockey underwear, T-shirts and dresses. On the cutting floor fabrics were laid out in layers on long tables and the patterns were cut using electric cutting machines.

1957

Speedo opened its new factory at 239 Pacific Highway Artarmon. It housed the head office, machine floor, cutting floor and a packing and dispatch section. It was heralded as one of the most modern sportswear factories in the Southern Hemisphere.

1960

Artist Peter Travis came up with a design to position the male swimwear briefs on the hips, not the waist. The iconic Speedo design, now favourably known as Budgie Smugglers, was an immediate hit. Rumour has it that the first men to wear these Speedos at Bondi Beach were arrested for indecent exposure.

1979

In the 1970s competition from overseas manufacturers became fierce. The Artarmon factory closed in 1979 and the company was sold to overseas investors.

1946

Ralstan was founded by Ralph and Frederick Staniland who found a niche market for high quality Australian made women's dressing gowns.

1960s

Ralstan opened a small machinist factory in Prentice Lane Willoughby. They were one of the first companies in NSW to use machine embroidery on clothing garments. Ralstan bought fabric from local designers such as John Kador but the majority of garments were made from a wool-mohair fabric woven in Onkaparinga, Adelaide.

1972

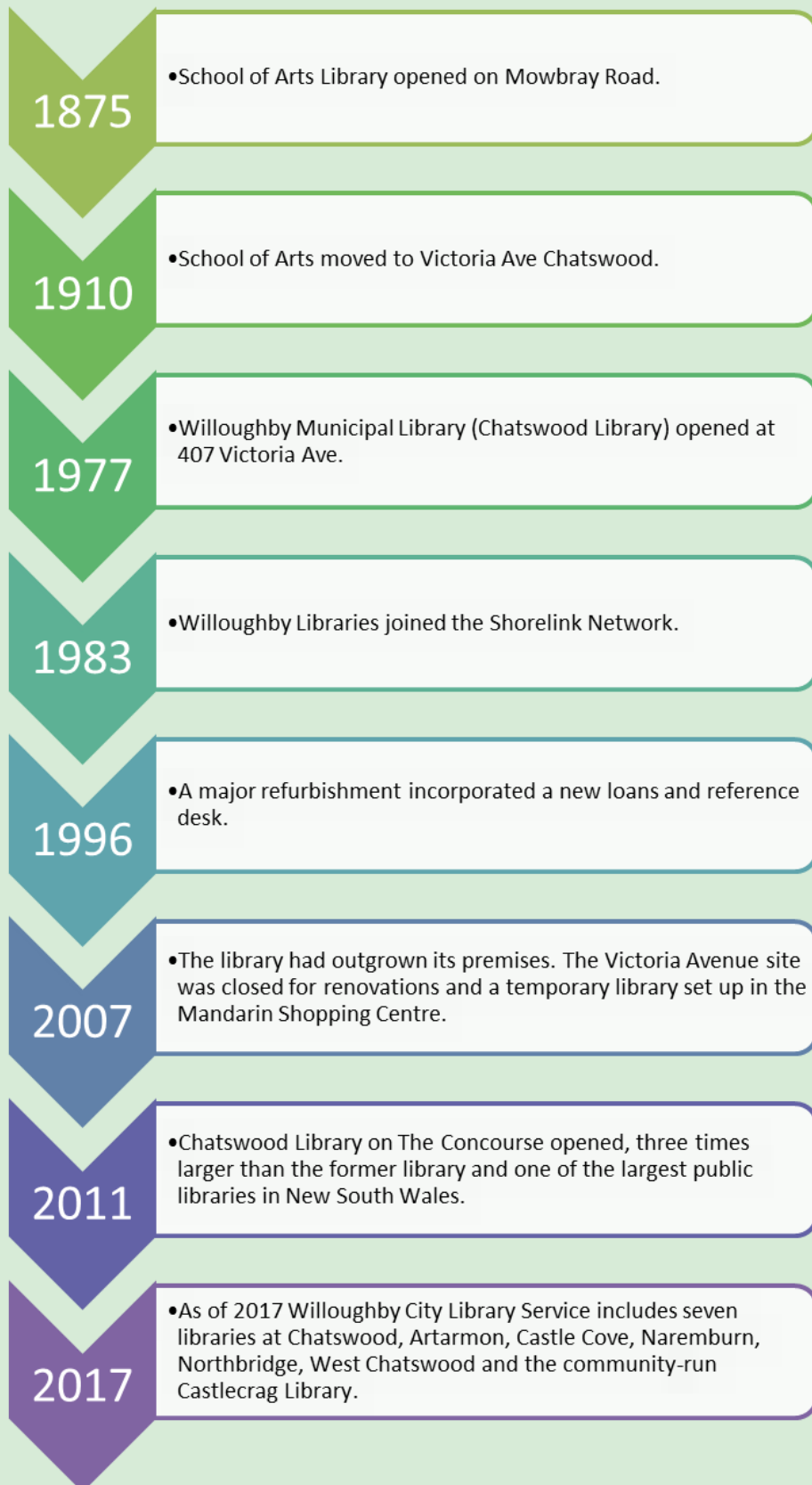
The reduction in tariffs opened up the market to cheaper imported clothing and the Willoughby factory was forced to close.

Ralstan



Colourful leisurewear gowns by Ralston featured in the *Australian Women's Weekly*, 24 December 1975

The library



Machines

Public libraries, as community and information spaces, are in a constant state of evolution. When technology changes, the way we store, find and use information changes. The ways in which we can serve our community change. Look at how the Willoughby City Library Service has embraced technology over the years.

Microfilm

Microfilm is film containing microphotographs of newspapers, catalogues or other documents.

Before the age of digitisation it was used to store information from records efficiently in a smaller space.

It enabled public access to information that was otherwise inaccessible due to preservation concerns.

Willoughby Library Services has held microfilm since the 1980s.



Microfilm Reader, 2002

Chatswood Library has many records on microfilm, that can now be read using a digital scanner and computer, rather than the microfilm reader.

TECHNOLOGY ON TREND

at Willoughby



Information desk, Willoughby Municipal Library, Chatswood, 1981. LPs (vinyl records) were available for loan or listening in the library.



The Audio Navigator

A digital audio book player designed with a simple interface for people with little technical knowledge and/or vision difficulties. This is a Navigator 3 model by Audio-Read Pty Ltd.

Books
on Tape

Books
on CD

eAudio
Books



Hear-A-Book service, Willoughby Municipal Library, 1981

TECHNOLOGY ON TREND

at Willoughby



E-Payment Kiosk

Pay library fees *without* going to the Welcome Desk!

- 1 Put money on your Library card in the Print Room at the

E-Payment Kiosk

- 2 Use the

E-Payments

Self Checkout machine



Willoughby City Library
Promoting literacy and lifelong learning
www.willoughby.nsw.gov.au/Library

Photocopiers at Willoughby Municipal Library, 1989. This one was a coin operated copier.

2017

We are in the process of digitising many of our Local Studies records.

Copiers now also print and scan. Value is added to the user's library card at the E-Payment Kiosk.

The Catalogue

What is the Catalogue?

A catalogue is a database of all the bibliographic items found in a library. The original type of catalogue was the card catalogue, with each card containing information such as the title, author and publisher of the item as well as its location within the library.

The card catalogue has been replaced by the Online Public Access Catalogue (OPAC) in most libraries. This is available on the Willoughby Library website and on the OPACs in the library.

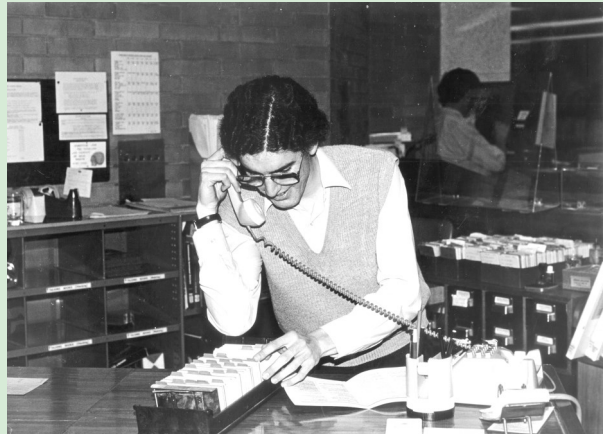


Interior of Willoughby Municipal Library, Chatswood, 1983. Note the card catalogue near the window.

TECHNOLOGY ON TREND

at Willoughby

Staff on phone, using
card catalogue, 1983



Online public
access catalogue
(OPAC) terminals at
Willoughby
Municipal Library,
Chatswood, 1989



Using the computer catalogue, 2005

TECHNOLOGY ON TREND at Willoughby

SL

WILLOUGHBY CITY LIBRARY

SUGGESTION BOX

Your say:

Library users should have the choice of using the computer or the catalogue cards. Did you conduct a survey before deciding what was best for us? It was a horrible shock to see that they had disappeared. I suppose one day there'll be no books either - just drawers of computer discs.

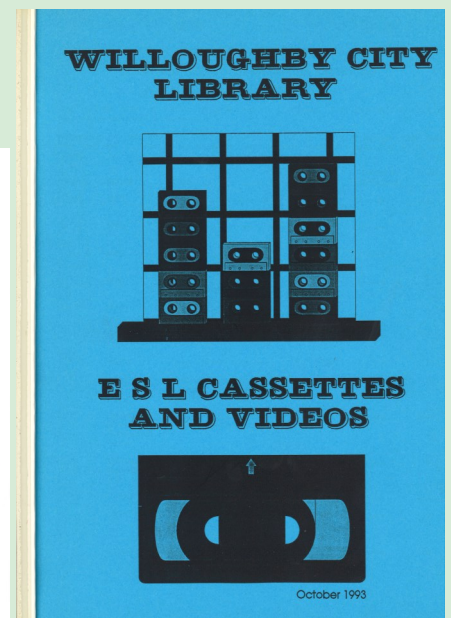
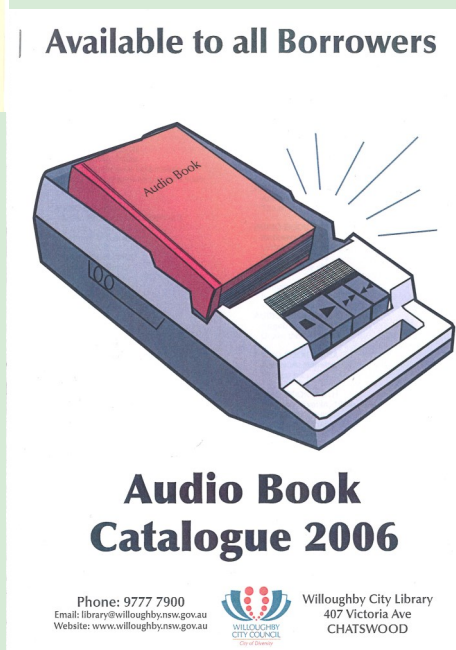
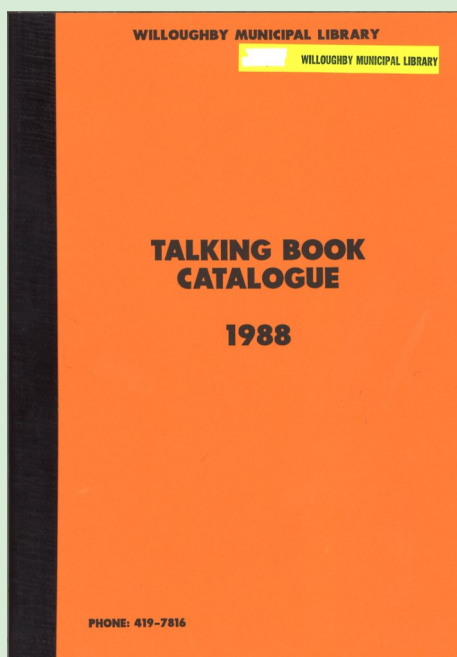
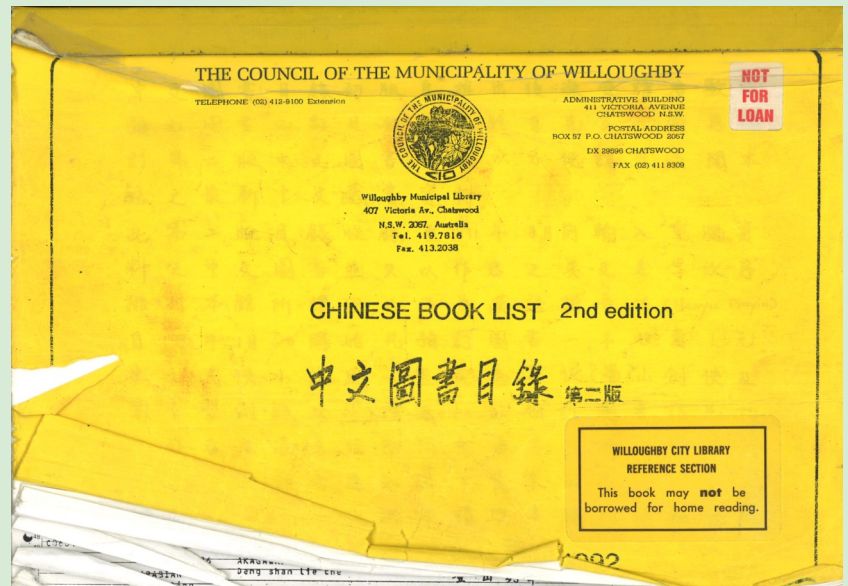
Our say:

WE ARE SORRY YOU WERE SO SHOCKED TO SEE THAT THE CARD CATALOGUE HAD DISAPPEARED, BUT WE WILL TRY TO EXPLAIN WHY IT WAS NECESSARY TO TAKE THAT ACTION. AFTER OUR COMPUTER CATALOGUE WAS INTRODUCED, WE CONTINUED TO MAINTAIN THE CARD CATALOGUE, BUT THIS BECAME INCREASINGLY MORE AND MORE COSTLY.

CURRENTLY WHEN ADDING NEW BOOKS TO OUR STOCK, ALL DATA IS KEYED INTO THE COMPUTER SYSTEM. TO MAINTAIN CARDS AS WELL, WE USED TO TYPE CARDS, CHECK AND SORT THEM INTO ALPHABETICAL ORDER, AND FILE THEM INTO THE CARD CATALOGUE. WHEN BOOKS WERE WITHDRAWN FROM STOCK, THE CARDS HAD TO BE REMOVED FROM THE CATALOGUE. ONE BOOK COULD HAVE AN AVERAGE OF 4-5 CARDS, AUTHOR, TITLE, AND SEVERAL SUBJECT CARDS. ALL OF THIS FILING AND WITHDRAWING FROM THE CATALOGUE WAS DONE FIRST THING IN THE MORNING, BEFORE THE LIBRARY OPENED TO THE PUBLIC. TO IMPROVE OUR SERVICE WE HAVE RECENTLY EXTENDED OUR HOURS BY OPENING AT 9 A.M. INSTEAD OF 10 A.M. EACH WEEKDAY. THIS HAS LIMITED THE AMOUNT OF TIME THE STAFF HAVE AVAILABLE TO DO MAINTENANCE OF STOCK AND RECORDS NORMALLY DONE WHILE THE LIBRARY WAS CLOSED. WE HOPE THE DAY WILL NEVER COME WHEN THERE WILL BE NO BOOKS.

Date: _____

The library has also used various paper catalogue lists for special collections over the years. In 2017 all new items are listed directly in the online catalogue.



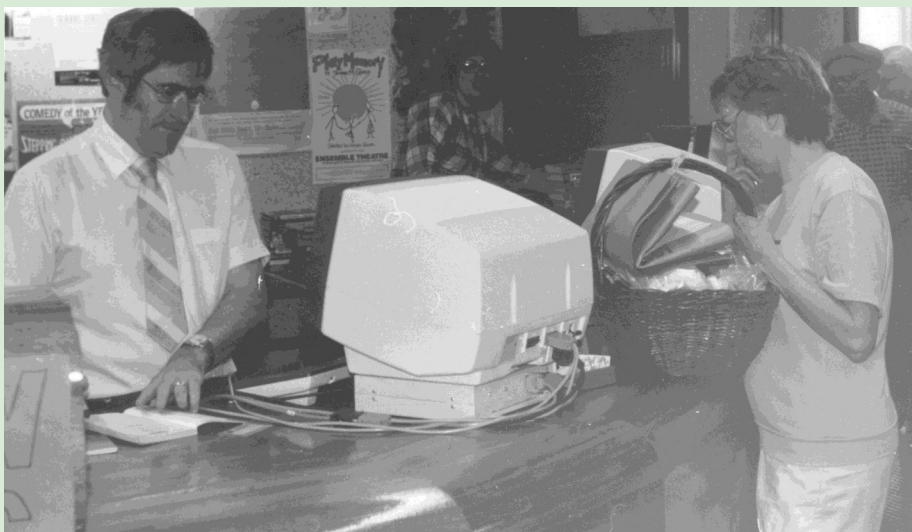
Loans and Returns

In the very first libraries loans and returns were recorded in handwritten ledgers. The call number, author and title of the book, and the borrower's identification were recorded.

Date-of-issue card: This contained the name, author and call number. Upon borrowing, the card was removed from the book. The borrower's information and the date of the loan was recorded.

Computer based loans and returns offered a more efficient system.

Willoughby City Libraries now use an online Library Management System (LMS), one part of which is a loans and returns portal.



Computerised loan system, 16 Sept 1985.

TECHNOLOGY ON TREND

at Willoughby



Circulation desk at Willoughby City Municipal Library, Chatswood, after the Easter long weekend, 1985.



Book returns after the Easter long weekend, April, 1985.

INTERESTING FACT

Castlecrag Community Library,
a volunteer run library open
6^{1/2} hours each week, still uses
an electric typewriter and a
paper based card system.



Online, web-based loan system at the temporary
library in the Mandarin Shopping Centre, July 2007.

TECHNOLOGY ON TREND

at Willoughby

Self Check Machines, Chatswood Library on The Concourse, 2015



Self Check Loans

RFID self check loans machines allow customers to issue and renew materials themselves, rather than queuing at the service desk.

Automated Returns

The Automated Materials Handling System (AMHS) is a system that returns books and sorts them into appropriate bins for loading onto trolleys for shelving.



The Returns Room, Chatswood Library on The Concourse, 2011

Information Storage

The term *library* is synonymous with information. The way we store information affects the *equipment* we use, how *much* information we can access and how *easily* we can access it.

Floppy Disc

A type of disk storage common from the mid-1970s to the early 2000s

The disk was composed of a thin and flexible magnetic storage medium sealed in a plastic case lined with fabric that removed dust particles. A normal 3½ inch disk could store 1.44 MB of data. This was enough for simple text documents.



Compact Disc

A digital optical disc data storage format



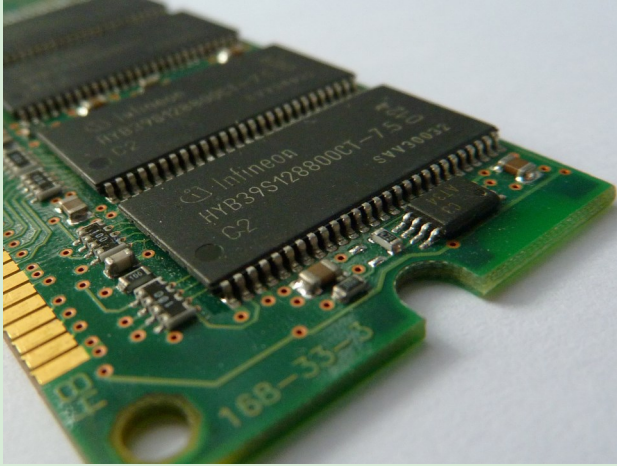
It was first released in 1982 as a way to store and play sound recordings. It was later adapted to other types of data storage such as the CD-ROM. The CD-ROM lost popularity with the dawn of the Internet. The library still has music CDs, Talking Book CDs and language kits containing CD-ROMs that receive regular use.

USB drive



A removable and rewritable storage device

AKA USB stick, thumb drive, pen drive, jump drive, disk key, disk on key, flash-drive, memory stick or USB memory. USB stands for Universal Serial Bus. It was introduced to the market in the early 2000s and could initially hold up to 8 MB of data! In 2017 USBs can hold over 100GB although the most affordable options are between 8GB and 16GB. These are popular for printing and scanning in the library.



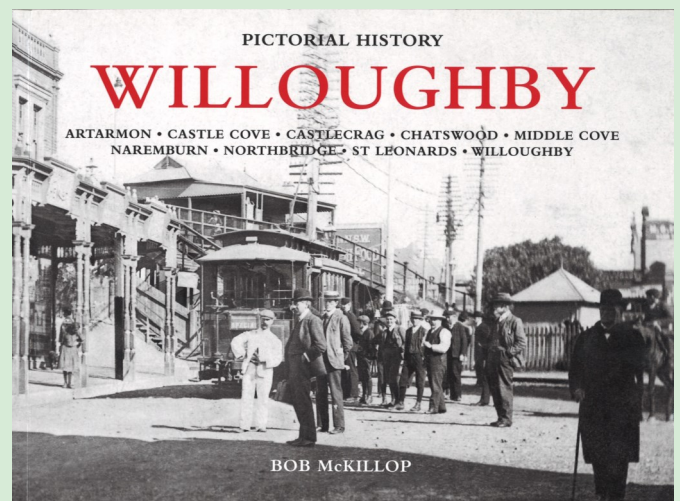
RAM

Random Access Memory

This is primarily used as main memory inside computer devices.

Paper

Many people still use information in hardcopy. Books and reports are two examples.



Online Storage

A LOT of information is stored on publicly accessible websites such as our library website. Other information is password protected, such as library subscriptions of eResources. However, more and more people are choosing to store their own data in secure online accounts also known as Cloud storage.

Computer +



In 1983
Willoughby
Municipal Library
acquired two
public computers.

Ethel

Fred

WILLOUGHBY MUNICIPAL LIBRARY.

APPLE MICROCOMPUTERS.

The library has two Apple IIe Microcomputers for public use, known familiarly as 'Fred' and 'Ethel'.

'Fred' is for general use, including staff use. 'Ethel' is fitted with an 80-column card and a printer, and is restricted to use by members of the public specifically authorized to do so. (List on following page). Authorization should be arranged through David Lakos or John Flint in normal business hours. (Authorization is necessary because the machine is used for Council and Library word processing and must be kept in condition for constant use.)

'Fred' bookings are limited to ONE HOUR, ONE BOOKING AT A TIME. Use discretion for educational programs.

'Ethel' bookings are flexible.

Generally speaking, use should be limited to two people at one time to minimize noise and other disturbance. If an adult is present, this rule may be relaxed.

Software programs on floppy disks are available for use by the public (housed in looseleaf binder). Note program numbers borrowed. Make sure that disks and manuals are returned.

We have
come a
long way
since
Fred and
Ethel!

TECHNOLOGY ON TREND

at Willoughby

Public access computers and photocopiers unavailable

We anticipate that the **public access computers** (internet, email and word processing) and **photocopiers** will **not** be available from 9am on Monday, 30th August until 9pm on Tuesday, 31st August 2010.

This is to allow for an upgrade of the PC Reservation system and printing facilities.

WiFi will be available during this time.

Willoughby Library apologises for any inconvenience.



Hardware and software have to be regularly maintained and updated.

Willoughby
City Library
poster,
2015.

Booking & logging onto computers

Internet computers:

Allow internet browsing and 2003 Microsoft Office applications.

Quick internet: Computers 1 and 2 — sessions are 30 min.

Normal Internet: Computers 5 to 15 — sessions are 60 min.

Email computers 3 and 4

These are the only computers available for access to email and are not booked computers. They also allow internet browsing and 2003 Microsoft Office applications.

They are only available for 30 min sessions and can only be used for one session a day.

Email computers have a \$1.50 charge for 30 min use.

Language Learning

These computers are set up for language learning such as ESL studies only. There are 5 Language learning computers in the Language learning room.

Childrens

These are set up with children's games and databases only. There are 6 children's computers found between the welcome desk and children's area. Printing is available from only one of the children's computers.

Local History

These 3 PCs are set up for Local and Genealogical studies as well as use of the microfilm/fiche reader.

Printing can be done from all but 5 of the Children's PCs. To print you need credit on your library card or a casual ticket from the Print-Copy Kiosk in Copy Room 1.



2017

Computer procedures have now changed. Willoughby City Libraries no longer charge for email access. Please visit our website or ask library staff for more information on current computer procedures.

2006

Wireless Internet technical trial began at Chatswood Library.

“

Dear Willoughby City Library Member,

Thanks for your patience and feedback regarding the wireless access trial we have been running over the past two weeks. We are aware that there have been various problems with the access and speed of the network, and in most cases it just wasn't working. This has caused frustration for all of us, we are just as keen as you to have the service up and running reliably as it has been at the other libraries. Fortunately after much investigation we have uncovered the problem which was causing a variety of things not to work. This has been fixed and thoroughly tested, so that now you should have seamless and uninterrupted internet access. We have extended the trial for another 2 weeks, so that you get a chance to see just how well it does work. We have also extended access to 4 hours at a time so that you can really relax and have time to test the service out.

Excerpt of a letter from Willoughby City Library to the Public, 2006

2007

Wireless Internet was implemented permanently at Chatswood Library.

Wifi was rolled out at Willoughby branch libraries between 2009-2010.

Wireless

The age of WiFi meant that Internet access was no longer limited to public computers.

People could sit anywhere in the library and connect to the Internet using their laptops. It triggered a proliferation of devices for both library staff and the public. Today

you can see clients' smart phones, tablets and notebooks scattered around the library.



Wireless Internet was introduced in November 2007.

TECHNOLOGY ON TREND

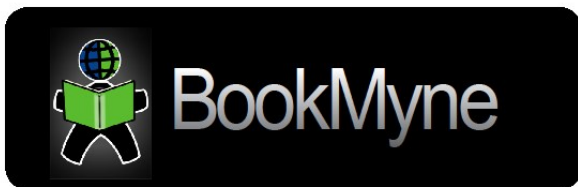
at Willoughby

2011

Nearly 1/3 of public library services in Australia offered wifi in all their libraries.

75% of libraries provided wifi in some or all of their service points.

At least 25% of libraries did not offer wifi. (*ALIA Internet Access in Public Libraries Survey, 2011*)



***Willoughby City Library
is now available on your iPhone!***

BookMyne is a library user app from SirsiDynix that lets you:

- Use GPS to locate nearby libraries (available for all Shorelink libraries, users can also browse the globe for any registered location)
- Navigate to the library's home page
- Search the library catalogue
- Renew checked out items
- Place and cancel hold requests
- Check your account details

Try BookMyne today



Willoughby City Library
poster, 2010.



2017

BookMyne is no longer available at Willoughby City Libraries.

TECHNOLOGY ON TREND

at Willoughby



**STARTUP GUIDE**
Softbook eBook

If you are unsure at any time regarding the use of this eBook reader phone
Willoughby City Library on 9777 7900 or return the device to
Willoughby City Library during library opening hours.

PLEASE READ THESE IMPORTANT SAFETY INSTRUCTIONS

When using the REB1100 eBook reading device, basic safety precautions should always be followed to reduce the risk of fire, electric shock and injury to persons, including the following:

1. **Do not use** the eBook near water (eg. near a bathtub, kitchen sink or laundry tub or near a swimming pool).
2. **Avoid using** the eBook during an electrical storm. There may be a remote risk of electric shock from lightning.
3. **Use only** the power adaptor and rechargeable battery included with your eBook. Do not dispose of the battery, return it to the library.
4. **CAUTION** – Do not remove the cover (or back). There are no user serviceable parts inside. Return to Willoughby Library for servicing.
5. **CAUTION** – To ensure reliable operation and to prevent overheating, provide adequate ventilation for your eBook and keep it away from heat sources. Provide for free air flow around the eBook and its power supply.

Using the ebook reader

1. To turn on the eBook reader press the **MENU** button once, which is located on top left of the device.
2. Press the **BOOKSHELF** button (top right of the device) to see the titles that are available on this e-book reader.
3. Remove the **stylus** (found inserted at the bottom right hand corner of the device) and touch it to the screen to select the title you wish to read. You can also touch the screen with a finger.
4. Pages are 'turned' by pressing the **right hand button** either to the left (back) or right (forward). Holding the button down continually will turn pages automatically one by one.
5. The **dials** on the right hand side allow you to adjust the brightness and contrast on the screen.
6. To turn the reader off press the **MENU** button once and press the **OFF** button on the screen.
7. To check the reading time available press the **MENU** button and the battery life will be displayed in the toolbar. Instructions on recharging the battery are included on the following page.

Original eBook Reader

This device came onto the market in the early 2000s before the Kindle, smart phones and tablets. It has 8MB of built in memory.

The library borrower had to sign a Loan Agreement agreeing to liability for the cost of loss or damage up to \$1,150.85. They were also issued with very comprehensive safety instructions.

The Internet: A Love Story

Libraries love providing access to information free to the public. The internet means that information and our library services are more accessible to the public.

1995

Library staff
Internet
access

1997

Public
Internet
access

2005



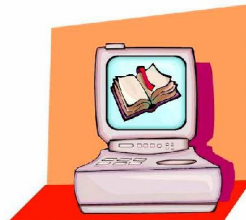
Internet Tutorial: Yahoo

2006

This computer is reserved for

eBook Tutorials

We apologise for any inconvenience.



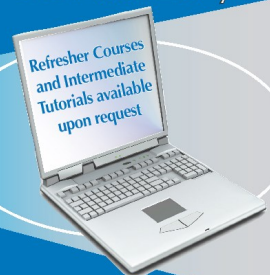
If you would like to book an eBook Tutorial,
please ask at the Information Desk.



2009

Free Internet Tutorials for Beginners

@ Chatswood Library



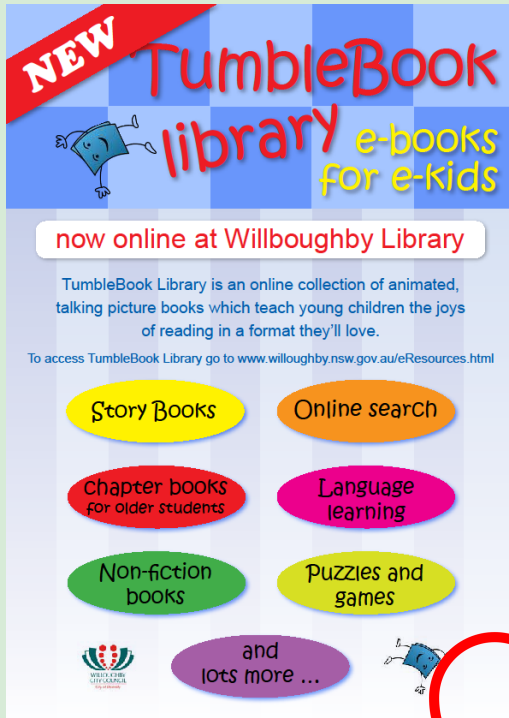
- * Tutorials held in English, Mandarin and Cantonese.
- * Maximum of 2 people per class.
- * Classes held on Tuesday morning and Friday afternoon

Bookings essential - phone the Library on 9777 7900 or ask at the Information Desk at Chatswood Library, Level 1, Mandarin Shopping Centre, 65 Albert Ave, Chatswood.



TECHNOLOGY ON TREND at Willoughby

2010



NEW TumbleBook library e-books for e-kids

now online at Willoughby Library

TumbleBook Library is an online collection of animated, talking picture books which teach young children the joys of reading in a format they'll love.

To access TumbleBook Library go to www.willoughby.nsw.gov.au/eResources.html

- Story Books
- Online search
- Chapter books for older students
- Language learning
- Non-fiction books
- Puzzles and games
- and lots more ...

2015

Using the Library's email computers

To use email you need credit on your library card or casual ticket.

Email use is \$1.50 for a half hour.

Email computers cannot be booked ahead of time.

At the end of your session you will be prompted if you want another half hour session. To do this you will need at least another \$1.50 credit.


There is a total 1 hour limit to e-mail use.

To use the email computers

- 1 Click on **Press Here To Start**.
- 2 Enter your library card or casual ticket number and click **OK**.
- 3 Click **30mins (\$1.50)**.
- 4 Click on **Yes** to confirm.

Be aware to extend your e-mail session an extra half hour or if you want to print from the e-mail computer you will need more than \$1.50 credit.

See the 'Printing from the library's internet computers' instructions for more advice.

@ Chatswood Library

Free Wi-Fi

HOTSPOT for Internet

Passwords are available at the Information Desk

Wireless Internet is available at Chatswood Library

2017: Willoughby City Libraries no longer have a password for the Internet Hotspot. Customers connecting to the WiFi will be prompted to accept our terms and conditions and will then automatically be logged in.

eReading at Willoughby City Library

<http://www.willoughby.nsw.gov.au/library/ecollections>



February 2015



Get set-up with **BorrowBox** eAudiobooks on your PC or laptop



Setting yourself up

Step 1: Go to www.willoughby.nsw.gov.au/Library Select 'eReading' button and then select Shorelink BorrowBox Library.

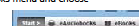
Step 2: Sign in

Click on the Sign In link on the top right of the page — Enter your Library Card barcode number and Library PIN/password. (Record details in a safe place) You are now ready to select your eAudiobook

Accessing BorrowBox eAudiobooks

Step 3: Choose a eAudiobook

In Digital Library, to view, click on eAudiobooks menu and choose from a category to browse eAudiobooks.



Step 4: Borrow your eAudiobooks

Once you have found a title, select Borrow or Reserve



Confirm your eAudiobook loan (or Cancel if you change your mind)



Open the Shorelink BorrowBox Library

Sign in to with your Library card barcode number and password

Choose your eAudiobooks

Borrow your eAudiobook



Willoughby City Library Services

Phone: 02 9777 7900 email: library@willoughby.nsw.gov.au
www.willoughby.nsw.gov.au/library

TECHNOLOGY ON TREND

at Willoughby

2016



LET'S GET **DIGITAL**
online
LEARNING



GOOD READING MAGAZINE



Want to find out the news on all the latest books?

Look to Good Reading Magazine for reviews and book club suggestions and to discover your next great read.

- Use at home or in the Library
- Easy to understand
- 24/7 access
- Reliable
- Free

 Willoughby City Library Services
02 9777 7900 | library@willoughby.nsw.gov.au
willoughby.nsw.gov.au/library

2017



Protect your privacy on
Social Media

Cecilia Wong – Online Services Librarian
July 2017



2017

Internet services and workshops are updated regularly. Please visit the library website or ask library staff for current practices.

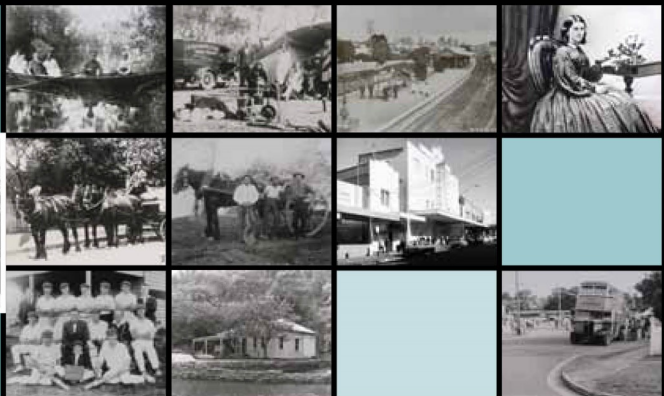
TECHNOLOGY ON TREND

at Willoughby

Picture Willoughby



Chatswood Library on The Concourse,
Lower Ground, 409 Victoria Ave, Chatswood



Picture Willoughby

Picture Willoughby comprises over 9,000 images of the local area available online via the Library website. These date from 1890 and include rare images documenting the Great Depression era relief work program. The digitisation of these images was made possible through grant funding from the State Library of NSW.

You are welcome to contribute to the Picture Willoughby archive by donating originals or scans of your own images of Willoughby district. Please ask the Local History staff, phone the library 9777 7900 or email library@willoughby.nsw.gov.au for more information.

{ This display is brought to you by the Local Studies Team at
Willoughby City Library Services, 2017. }